

# ISTOBAL M'WASH PRO



**ISTOBAL**  
Vehicle Wash & Care

# THE NEW M'WASH PRO

ISTOBAL unifies the latest technology and aesthetics of the group's European models with the versatility of the FLEX5 line to present the new **ISTOBAL M'WASH PRO**.

Available with the same configurations as the FLEX5, the new **ISTOBAL M'WASH PRO** offers a higher level of control and smoother performance with a sexier look. This equipment is the next step in the evolution of the ISTOBAL M series – machines that are effortlessly efficient with the flexibility to meet every need.



- ✓ New look – Sexier design for better presentation
- ✓ Color LED display for custom messaging
- ✓ Sharper image with enhanced LED lighting options
- ✓ Back-tilting vertical brushes for better performance at vehicle rear
- ✓ Variable frequency drives for geared motors
- ✓ Improved onboard dryers
- ✓ Angled doors for better driver visibility



# CONFIGURATIONS

3 Brush

5 Brush

Combo

Hybrid

Touchfree

Extended Height

Extended Width

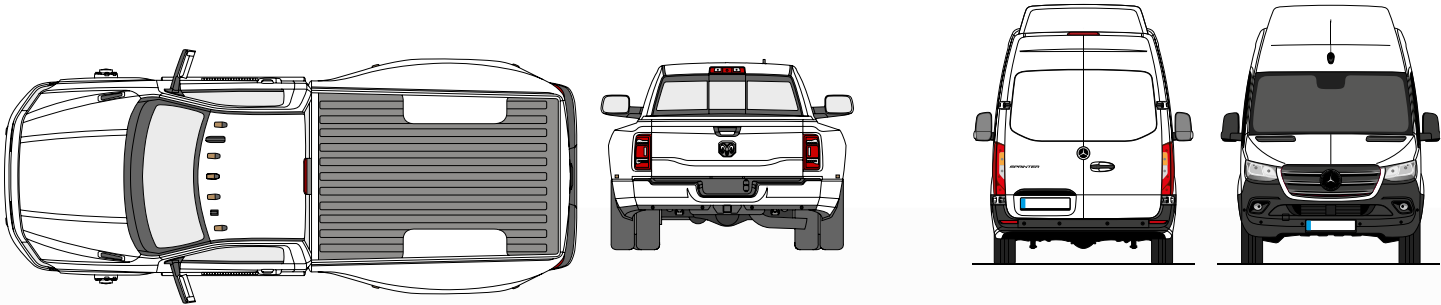


✓ **GREAT VERSATILITY**  
with many different configurations



✓ **EXTENDED SIZES AVAILABLE**  
for extra-tall and extra-wide vehicles

WASH DIMENSIONS					
	3 BRUSH	5 BRUSH	TOUCHFREE	EXTENDED HEIGHT	EXTENDED WIDTH
MAX WASH HEIGHT	7'-7"	7'-7"	7'-7"	9'-7"	7'-7"
MAX WASH WIDTH	8'-10"	8'-10"	8'-10"	8'-10"	9'-10"
HEIGHT OF MACHINE	10'-2"	10'-2"	10'-2"	12'-2"	10'-2"
RECOMMENDED BAY LENGTH	36'-5"	36'-5"	36'-5"	36'-5"	36'-5"
MINIMUM BAY WIDTH	14'-1"	14'-1"	14'-1"	14'-1"	15'-1"
RECOMMENDED CEILING HEIGHT	11'-6"	11'-6"	11'-6"	13'-6"	11'-6"



# SPECIFICATIONS

## NEW DESIGN + CUSTOMIZATION

### DESIGN

Sleek new details enhance the look of the equipment and improve the user experience.

- > Angled doors for better visibility
- > Slimmer front fairing



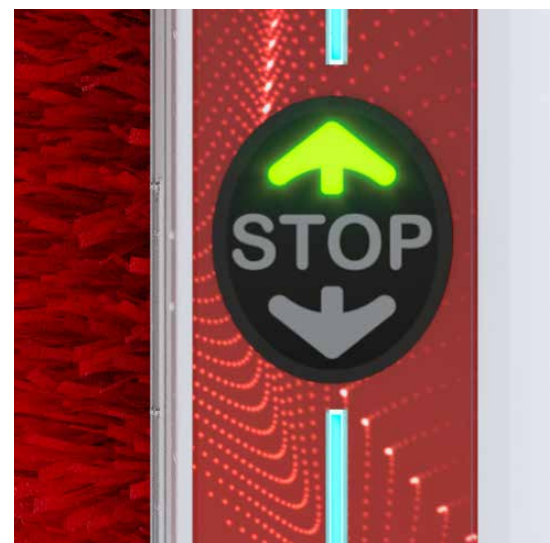
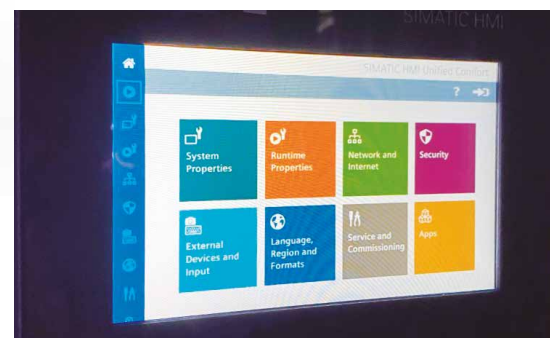
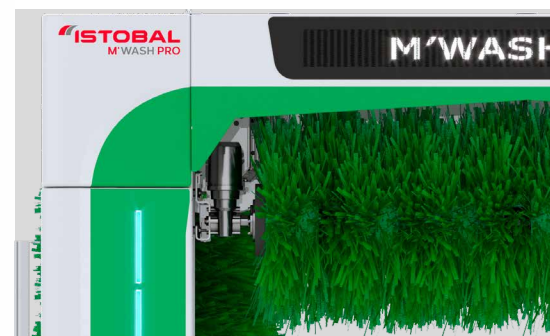
### CUSTOMIZATION OPTIONS

ISTOBAL offers multiple brush, vinyl, and LED options to customize your equipment to match your brand!

- 1 Programmable top LED grabs attention
- 2 Customize vinyls to match your brand image
- 3 Color-changing interior LEDs
- 4 Bright, left & right LED positioners
- 5 Choose from 17 brush colors

### VINYL COLORS AND BRUSHES

The M'WASH PRO can be customized in many ways, including **vinyl, LED lighting, and brush colors**, making this rollover a display of design and personalization.



### INCREASED WASH COVERAGE with the full tilt vertical brush

Washing optimization thanks to the pneumatic tilt of the vertical brushes in two directions:

**Lateral tilt:** Greater washing precision thanks to the 10° inclination of the vertical brushes which, in combination with the horizontal brush, perfects the washing of any shape of vehicle.

**Rear tilting:** With the pneumatic inclination of the 12° vertical brushes, it is possible to optimally wash the rear of the most complicated vehicles.

### ADVANCED PLC

ISTOBAL's new, **advanced PLC** not only smooths brush movements but also makes it possible to comfortably configure wash speeds, chemical, light codes, and other functions as needed.

### INNOVATIVE TECHNOLOGY with the new UNIFIED screen

A **7" color touch screen** integrated into the command post facilitates the connection and control of all options installed in the car wash making the facility 100% connectable.

### CENTRALIZED CONTROL

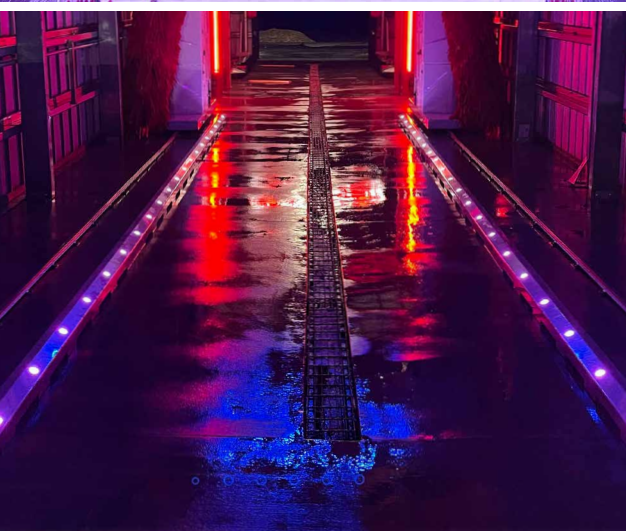
The **M'WASH PRO** includes Siemens-controlled automation with a large capacity and high processing speed that allow for agile and centralized control of the machine.

### SAFETY

The **M'WASH PRO** offers various safety protocols including an acoustic signal for movement, in-bay human detection, an external warning alarm, and interior security to prevent the wrong positioning of the vehicle.



# OPTIONAL FEATURES



## ✓ HIGH-PRESSURE

Multiple high-pressure options are available to prepare the vehicle and improve the result of the subsequent wash.

- > Horizontal, contouring, high-pressure
- > Fixed, side high-pressure
- > Oscillating, side high-pressure

All high-pressure options have stainless steel, rotating turbo nozzles for greater impact (available only for contouring and oscillating options).

## ✓ ONBOARD DRYING SYSTEM

The **ISTOBAL M'WASH PRO's** onboard drying option offers maximum efficiency with minimum consumption. The design of the horizontal and lateral drying nozzles maximizes performance while minimizing electrical consumption at speeds with low revolutions (1,500 rpm motors) for high-flow drying. With this, we achieve high-quality drying with less noise. (74.7dB in the 22HP combination).

- > **Available drying powers:**
  - 2 x 5.5HP lateral nozzles
  - 2 x 5.5HP horizontal contouring nozzle
- > **3D Flow diffuser** improves the quality of horizontal drying, especially in the front and rear parts of the vehicle.

## ✓ WHEEL-WASH

**Extendable double disc wheel wash with integrated high-pressure** for focused impact on the tires and the lower side of the vehicle. Its alternating direction of rotation achieves better results in new wheel designs.

The geared motors of the wheel wash work with variable frequency drives, making all rotation changes much softer.

**High-pressure wheel wash with 4 nozzles**, improves the standard wash program.

**High-pressure wheel wash with 6 nozzles**, achieves optimal tire washing and is the ideal complement for a touch free washing program.

## ✓ LAVA FOAM CURTAIN

This option provides a surprising way of washing the vehicle through a **foam curtain** of chemicals that deposits a highly dense layer of product over the entire vehicle. Installed on the inside of the rear fairing, **it is applied in a separate pass** from the wash with two application options available: waterfall and rain.

A pleasant aroma and an **LED light show** makes the washing experience quite a spectacle.

## ✓ STAINLESS STEEL LED GUIDERAILS

Elevate your wash bay with a light show that captures attention! ISTOBAL's **Stainless Steel LED Guiderails** offer multiple, bright, flashing lights that not only excite your customers' senses but also serve as an added safety feature to help guide the vehicle through the bay.





## ✓ REVOLUTIONARY

ISTOBAL's revolutionary Link-it® brush fitting system takes things one step further. This system uses a one-piece mechanism that reduces the weight of the brush and makes it easier to fit, maintain, and replace the wash material.

## ✓ SUSTAINABLE

During brush changes, the entire mechanism is not discarded, reducing the environmental impact of recycling waste from a brush section by up to 50%. Additionally, the transport and storage of wash material in a conventional brush system can be reduced by up to 70%.

This material is highly impact, heat, and fatigue resistant and does not degrade when exposed to cleaning agents.

## ADVANTAGES

- > Fast and economical maintenance
- > Improved ease of assembly
- > Maximum efficiency with minimal expense
- > Interchangeable and disposable material
- > Maximum respect for the environment



In a digital world, it goes without saying that your car wash installation should be digital too. ISTOBAL increases the profitability and uptime of your equipment by providing you with advanced maintenance and management services, as well as access to your equipment data.

